

2016 national curriculum tests

Key stage 1

New for 2016

- The new national curriculum will be assessed for the first time in May 2016.
- Schools must administer the KS1 tests during May 2016. A number of schools will be selected to administer tests early in April to inform standard setting.
- Outcomes of the new KS1 tests will need to be converted into scaled scores, not levels, using the conversion tables provided.
- Headteachers will be required to complete and submit headteacher's declaration forms that will cover both the KS1 tests and the phonics screening check.
- A new set of tests replaces previous tests and tasks. 2007 and 2009 test and task materials must not be used to inform teacher assessment judgements.
- There is no longer a test for English writing.
- Schools (except participating independent schools) don't need to order standard test materials as orders will be based on autumn census data.

2016 sample test materials are available on www.gov.uk/sta



Standards
& Testing
Agency

Information

Monday 28 September:
'Test orders' section of
NCA tools opens.

Action

Monday 28 September:
Create your new NCA tools
website password.
All accounts are reset for
the new test cycle.

September

Action

Monday 28 September:
Independent schools
participating in the KS1
assessments need to order both
standard and modified KS1 tests
by **Friday 27 November.**

Action

w/c Monday 28 September:
Maintained schools and
academies need to order
modified KS1 tests by
Friday 27 November.

Deadline

Friday 27 November:

For participating independent schools to place their orders for both standard and modified KS1 tests, and to issue privacy notices.

Deadline

Friday 27 November:

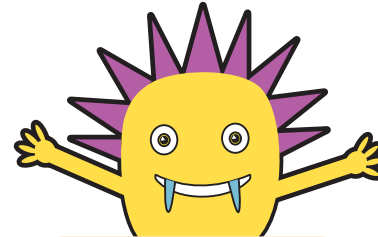
For maintained schools and academies to order modified versions of the KS1 tests.



Information

During March:

Refreshed phonics 'check administrators' guide' (CAG) published on GOV.UK.



Information

w/c Monday 18 April:

Delivery of standard and modified tests starts this week.

October

November

December

January
to March

April

Deadline

Friday 27 November:

For special schools, PRUs, hospital schools and secure units to confirm zero test orders where all pupils are working below the standard of the tests.

Deadline

End of autumn term:

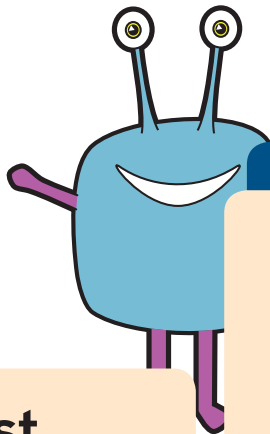
For academies to have chosen which LA will undertake their monitoring of the KS1 national curriculum assessments.

Action

Early KS1 test administration

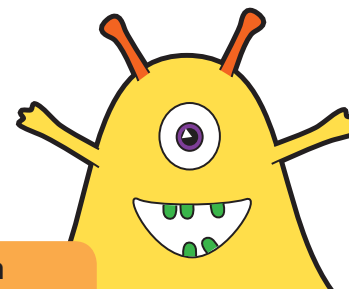
Monday 11 April to Friday 22 April:

Selected schools to administer one of the tests early to inform standard setting.



Information

w/c Monday 6 June:
Phonics screening check materials delivered to schools.



Action

Phonics check week

Monday 13 June to Friday 17 June:
Pupils in year 2 must also take the check if they did not meet the standard in year 1 or have not taken it before. If a pupil is absent during check week, the check can be administered w/c 20 June.

Action

KS1 test administration

Test administration window open throughout May.

May

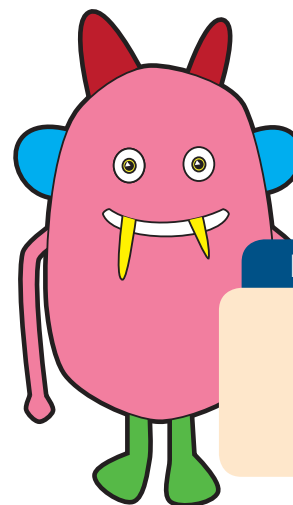
June

Action

Beginning of June:
Publication of KS1 raw score to scaled score conversion tables on GOV.UK to enable schools to convert scores and identify whether pupils have achieved the expected standard in each test.

Deadline

Friday 24 June:
For submission of the headteacher's declaration forms for the KS1 tests and phonics screening check on the NCA tools website at <https://ncatools.education.gov.uk>



Information

Monday 27 June:
Publication of phonics threshold on GOV.UK.

Information

Early July:

Make sure you know the LA's deadline for submitting teacher assessment data.

July

Action

By end of summer term:

Schools and academies to have submitted their phonics screening check and end of KS1 assessment outcomes to LAs.

Action

By end of summer term:

Report to parents.

Key tasks	Deadline
Order modified test materials and, for participating independent schools only, standard tests	Friday 27 November
Academies to have chosen which LA will undertake their monitoring of the KS1 national curriculum assessments	End of autumn term
Selected schools to administer tests early to inform standard setting	Monday 11 April to Friday 22 April
KS1 test administration window	During May
Publication of raw score to scaled score conversion tables on GOV.UK	Beginning of June
Phonics screening check week	Monday 13 June to Friday 17 June
Submit the headteacher's declaration forms for the KS1 tests and phonics screening check	Friday 24 June
Publication of phonics threshold on GOV.UK	Monday 27 June
Submit phonics screening check results and end of KS1 assessment outcomes to LAs	End of summer term
Report to parents	End of summer term
LAs submit results to DfE	End of July

For detailed information read the:

- assessment and reporting arrangements (ARA)
- check administration guidance (CAG)

For all online test administration, visit the NCA tools website at <https://ncatools.education.gov.uk>

Remember to keep your school's details updated on the EduBase website: www.education.gov.uk/edubase

Keep up-to-date with our assessment update emails. These are sent to NCA tools super users throughout the test cycle.

Contact the national curriculum assessments helpline on **0300 303 3013** if you have any queries.

Visit **GOV.UK** for information, latest news and publications: www.gov.uk/sta